

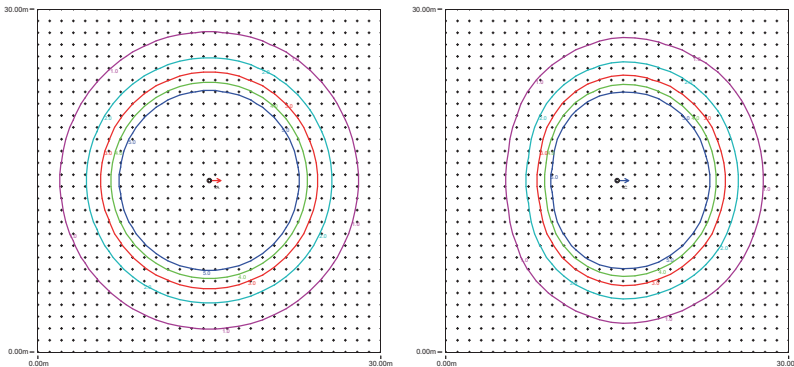
SUGG LED PANEL 50W

SUGG LED PANEL 50W

The 50w panel has two branches 12 x LED's mounted into a panel, this will fit in a range of Luminaires offering a performance solution to both new & existing schemes, providing the benefits below:

- Fewer luminaires
- Lower energy costs
- Carbon reduction
- Warm colour temperatures
- Improved RA rendering
- Low ongoing maintenance

These distributions are both produced at a 5m mounting heights on a 1m grid of 30m x 30m. The left is an area lighting distribution and the right a wide road distribution.



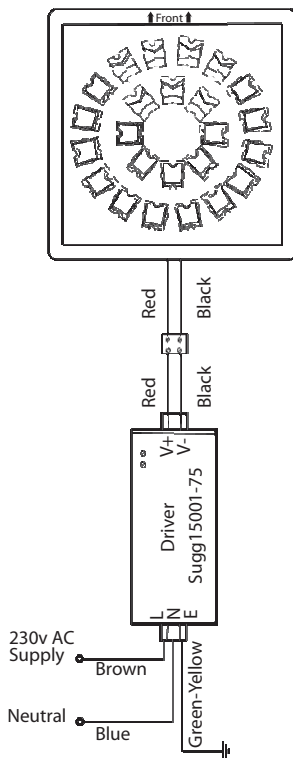
Sugg lighting 50w LED Light panel kit consists of a 50w 24 x LED module fitted with individual lenses, supplied with a constant current (Sugg15001-75) driver. Combining to produce a distribution pattern, creating a variety of solutions to suit a wide range of applications.

The dimming unit is supplied with a constant current driver- (Sugg8001-75 Dimming).

| LED Constant Current 24 LEDs | | | |
|------------------------------|-------------------------|-----------------|--------|
| Number of LED | Cree XT-E (2 x 12) | 14 number | |
| | Power Supply | LED Nom Current | 600mA |
| | Temperature tc | | 90°C |
| | Maximum Voltage | | 48v DC |
| | Nominal Power | 46W | |
| Lumen Efficacy | Using the SLD AC Driver | 82 lm/W | |
| Light Characteristics | Colour Temperature | 4000K | |
| | Luminous Flux | 4,188 lm | |
| | Rendering Index | RA >70 | |
| Lumen Maintenance | L70 B10 (tc =60°C) | > 70,000 h | |
| Projected Life | TM21 L70 tc=80°C | > 45,000 h | |
| Environmental Considerations | Operating Temps | -25°C>+50°C | |
| | IP protection degree | 20 | |
| | Board Surface tc | 90°C | |
| | Humidity | 20% > 95% | |
| Driver Circuit Protection | Short Circuit | Auto reset | |
| | Over Voltage | 54-60v | |
| | Over temperature | 85 +/- 10°C | |

LED Panel dimensions
180mm L x 170mm W x 60mm High

Driver dimensions
173mm L x 65mm W x 35mm High



Existing Schemes

Replacement gear trays can be made to retro fit into existing lanterns providing the benefits below at a reduced unit cost.

- IP65 options for IP54 lanterns
- Improved energy efficiency
- Improved colour rendering RA
- Carbon reduction
- Warm colour temperatures



Tel: 01293 540111 Fax: 01293 540114 Email: sales@sugglighting.co.uk Web: www.sugglighting.co.uk

Sugg Lighting Ltd, Foundry Lane, Horsham, West Sussex, RH13 5PX England

© Sugg Lighting reserve the right to change the construction of their products without prior consultation. This ensures that product developments and continued improvements are maintained.

