

Type description for retractable supply post MS SE 80 Standard

Technical data

Protection stages:
Protection equipment:
Mains voltage/ frequency:
Kind of voltage:
Connection value:
Feed in cable max. permissible:

IP 44 for electrical outlets
IP 55 for distributors
earth contact class 1
230/400 V, 50 Hz
TN-C-S System
approx. 130 kW
4 x 150 mm²

Equipment side A

3 distributor, 10 partitions
1 CEE 125 A, 5-pol.
1 CEE 32 A, 5-pol.
1 CEE 16 A, 5-pol.
6 pieces of earthed outlets
1 fault current protective switch
125/0,3 A, 4-pol.
1 fault current protective switch
63/0,03 A, 4-pol.
1 cable protective switch
125 A, C, 3-pol.
1 cable protect. switch 32 A, B, 3-pol.
1 cable protect. switch 16 A, B, 3-pol.
5 cables protect. switch
16 A, B, 1-pol.

Equipment side B

3 distributor, 10 partitions
1 CEE 63 A, 5-pol.
1 CEE 32 A, 5-pol.
2 CEE 16 A, 5-pol.
6 pieces of earthed outlets
1 fault current protective switch
63/0,3 A, 4-pol.
1 fault current protective switch
63/0,03 A, 4-pol.
1 cable protect. switch 63 A, B, 3-pol.
1 cables protect. switch 32 A, B, 3-pol.
2 cables protect. switch 16 A, B, 3-pol.
4 cables protect. switch 16 A, B, 1-pol.
1 cable protect. switch 2 A, K, 1-pol.
(for heating)

Weights

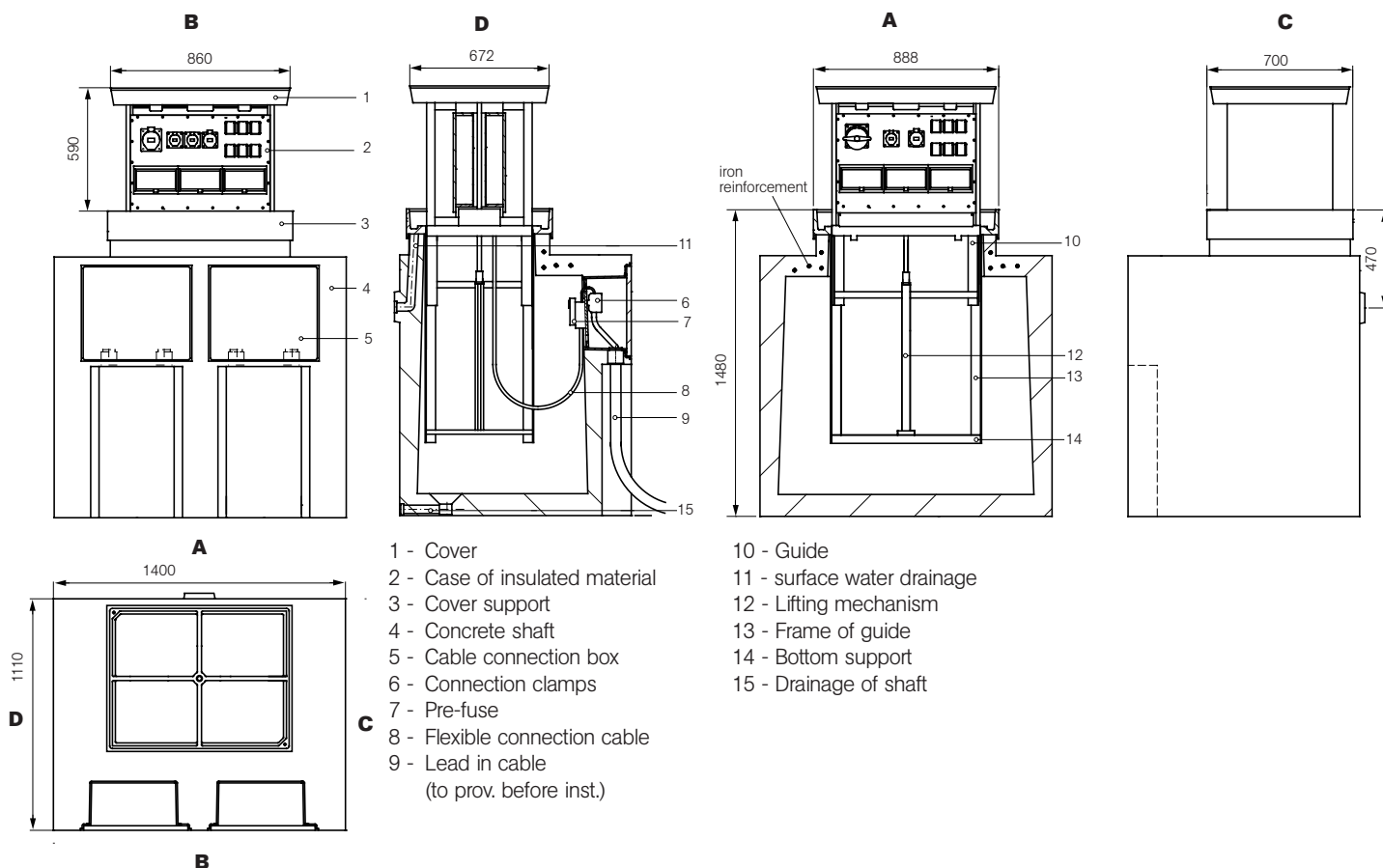
Concrete shaft + Shaft insert: 2000 kg
Device column equipped: 80 kg

Dimensions

Concrete shaft (H x W x D): 1350 x 1400 x 1110 mm
Cover support (incl. sealing compound): 130 mm
Installation depth: 1480 mm
Stroke: 590 mm
Space for pavement in cover: 50 mm
Load capacity for the paved cover under DIN EN/ 24: C 250, 25 t point load
Lifting mechanism: Thread spindle
Sewage connections: 2 x DN 40

Order-No.

MS SE 80-Sta-01





**Submission text for retractable supply post
MS SE 80 Standard**

**Retractable, practicable, column for connection and distribution of electricity as per the VDE-regulations for open space, soil flushing installation.
Load capacity of the paved cover under the provisions of DIN EN 124 - C 250 (25t point load),
kind of protection IP 44 for earth plugs,
kind of protection IP 55 for distributors**

consisting of:

Concrete shaft

Supporting concrete shaft under the provisions of DIN 1045 - B 45
(for traffic loads under the provisions of DIN 1072, bridge class SLW 60)
for a protected insertion of the retractable supply post into soil.

There are integrated:

- 2 pieces of cable connection boxes for assembling of a connection module each
- For each cable connection box two cable.lead through for the reception of a cable lead on
- C-bar for tension relief of the connection cable
- Thread-connection plug for the installation of the exterior earth contact
- Surface water drainage DN 40
- Shaft drainage DN 40

Shift insertion

Metal insertion of corrosion resistant aluminium

consisting of:

- Guide frame (corrosion resistant aluminium profiles)
as sliding supports for the device column
- Cover support with sealing, pavement frame, drainage,
open pipe for surface water drainage
- Bottom support with lifting mechanism (thread-spindle, spindle-guide and spindle nut).

Device column

Horizontal draw out case construction of weather resistant PVC with
built on shift cover of cast aluminium, built-in space of 50 mm for pavement.

The case of insulated material (IP 55) is a self supporting construction and
constructed as a rugged and shock resistant device.

2 sides (A+B) are provided for the equipment of the device.

Lead-in by flexible connection cable 4 x 95 mm².

The lifting mechanism with thread spindle is located in the centre of the device column.

For the operating by crank handle the spindle is passed through the cover and is watertight.

Electric device modules

The interior wiring of the devices and the feeding-in are arranged for the TN-C-S system (as per diagram of connections).
Wiring for other systems only after technical clarification and written contract.

Side A:

- 3 pieces of distribution module with transparent cover for 10 partitions
- 1 piece of attached electrical outlet CEE 125 A, 5-pol.
- 1 piece of attached electrical outlet CEE 32 A, 5-pol.
- 1 piece of attached electrical outlet CEE 16 A, 5-pol.
- 6 pieces of electrical earth outlets
- 1 piece of fault current protective switch FI 125 A, 4-pol., 300 mA
- 1 piece of fault current protective switch FI 63 A, 4-pol., 30 mA
- 1 piece of cable protective switch LS 125 A, C, 3-pol.
- 1 piece of cable protective switch LS 32 A, B, 3-pol.
- 1 piece of cable protective switch LS 16 A, B, 3-pol.
- 5 pieces of cable protective switch LS 16 A, B, 1-pol.

Side B:

- 3 pieces of distribution module with transparent cover for 10 partitions
- 1 piece of attached electrical outlet CEE 63 A, 5-pol.
- 1 piece of attached electrical outlet CEE 32 A, 5-pol.
- 2 pieces of attached electrical outlet CEE 16 A, 5-pol.
- 6 pieces of electrical earth outlets
- 1 piece of fault current protective switch FI 63 A, 4-pol., 30 mA
- 1 piece of fault current protective switch FI 63 A, 4-pol., 300 mA
- 1 piece of cable protective switch LS 63 A, B, 3-pol.
- 1 piece of cable protective switch LS 32 A, B, 3-pol.
- 2 pieces of cable protective switch LS 16 A, B, 3-pol.
- 4 pieces of cable protective switch LS 16 A, B, 1-pol.
- 1 piece of cable protective switch LS 2 A, K, 1-pol. for heating

Cable connection module KAM 150-1

PVC device supporting base with distributing bar -derivating post 70-150 mm² for feeding in or sliding on of lead in cable.

Pre-fuse NH 01 200 A and tension relief for the flexible connection cable.

Cable leading on KDF 150-1

Screwing sockets PG 48 with shrink-hose for watertight leading in of the connection cable and of the leading-off cable.

Crank handle

(included in price when ordered)

Price: per piece + VAT

Delivery: assembled completely, completely wired and checked
ex factory, packaging not included

Delivery time: min. 6 - 8 weeks after receipt of order and technical clarification.

